



**REGIONAL SPECIALISED METEOROLOGICAL CENTRE-TROPICAL CYCLONES, NEW DELHI
TROPICAL WEATHER OUTLOOK**

DEMS-RSMC TROPICAL CYCLONES NEW DELHI DATED 13.09.2023

TROPICAL WEATHER OUTLOOK FOR NORTH INDIAN OCEAN (THE BAY OF BENGAL AND THE ARABIAN SEA) VALID FOR NEXT 168 HOURS ISSUED AT 0600 UTC OF 13.09.2023 BASED ON 0300 UTC OF 13.09.2023.

BAY OF BENGAL:

UNDER THE INFLUENCE OF YESTERDAY'S CYCLONIC CIRCULATION OVER CENTRAL PARTS OF BAY OF BENGAL & ADJOINING NORTH BAY OF BENGAL, A LOW PRESSURE AREA FORMED OVER CENTRAL PARTS OF NORTH BAY OF BENGAL AT 0000 UTC OF TODAY, THE 13TH SEPTEMBER, 2023. IT LAY OVER NORTHWEST & ADJOINING WESTCENTRAL BAY OF BENGAL AT 0300 UTC OF TODAY, THE 13TH SEPTEMBER, 2023. IT IS LIKELY TO BECOME MORE MARKED DURING NEXT 24 HOURS AND MOVE ACROSS SOUTH ODISHA AND SOUTH CHHATTISGARH DURING NEXT 3 DAYS.

SCATTERED TO BROKEN LOW AND MEDIUM CLOUDS WITH EMBEDDED INTENSE TO VERY INTENSE CONVECTION LAY OVER NORTH & CENTRAL BAY OF BENGAL AND NORTH ANDAMAN SEA. SCATTERED LOW AND MEDIUM CLOUDS WITH EMBEDDED MODERATE TO INTENSE CONVECTION LAY OVER SOUTH BAY OF BENGAL, ARAKAN COAST, GULF OF MARTABAN AND WEAK TO MODERATE CONVECTION OVER SOUTH ANDAMAN SEA.

PROBABILITY OF CYCLOGENESIS (FORMATION OF DEPRESSION) DURING NEXT 168 HRS:

24 HOURS	24-48 HOURS	48-72 HOURS	72-96 HOURS	96-120 HOURS	120-144 HOURS	144-168 HOURS
NIL	NIL	NIL	NIL	NIL	NIL	NIL

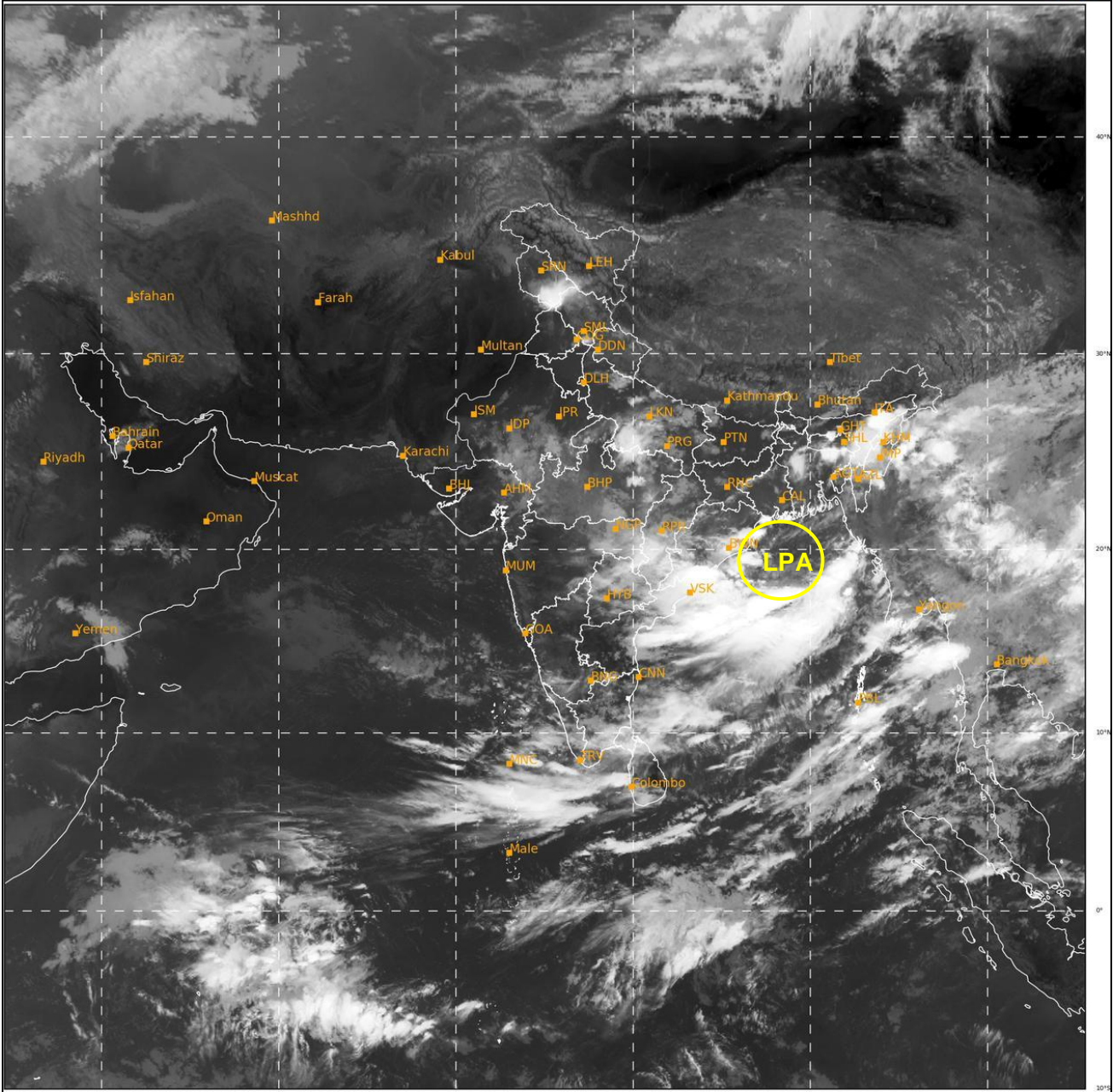
ARABIAN SEA:

SCATTERED LOW AND MEDIUM CLOUDS WITH EMBEDDED MODERATE TO INTENSE CONVECTION LAY OVER SOUTHEAST ARABIAN SEA, LAKSHADWEEP ISLANDS AREA AND COMORIN AREA.

PROBABILITY OF CYCLOGENESIS (FORMATION OF DEPRESSION) DURING NEXT 168 HRS:

24 HOURS	24-48 HOURS	48-72 HOURS	72-96 HOURS	96-120 HOURS	120-144 HOURS	144-168 HOURS
NIL	NIL	NIL	NIL	NIL	NIL	NIL

Remarks: NIL



417

930

IMD, DELHI

LPA: LOW PRESSURE AREA